



深圳市科瑞康实业有限公司 SHENZHEN CREATIVE INDUSTRY CO.,LTD

文件编号:

版本号: V1.0

分发号:

作业指导书

标 题

PC-900Pro printer installation

生效日期:

页次: 第 1 页 共 3 页

分发部门: ☒ 生产部 ☐ 物控部 ☐ 质管部 ☒ 工程部 ☐ 商务部 ☐ 客户服务部

1.Purpose: To guide how to install the printer on PC-900Pro

2.Scope: PC-900Pro Vital Signs Monitor

3.Tools: Phillips screwdrivers, electric screwdrivers and anti-static wristband or gloves.

4.Parts and consumables list: PC-900Pro Vital Signs Monitors, P9 printer, printer serial cable, two ST2.3x6 screws.

5.Assembly diagrams and procedures:

Step 1: Remove the battery from the bottom of device

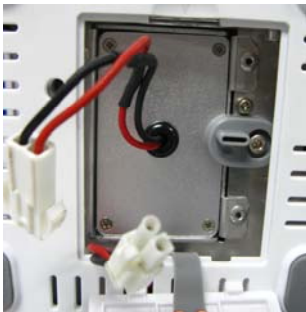


Figure A



Figure B

Step 2: Disassemble the front cover

a. Disassemble four(4) screws as shown on below figures

b. When remove the front cover, pls be careful with the connecting wires inside the monitor



Figure C

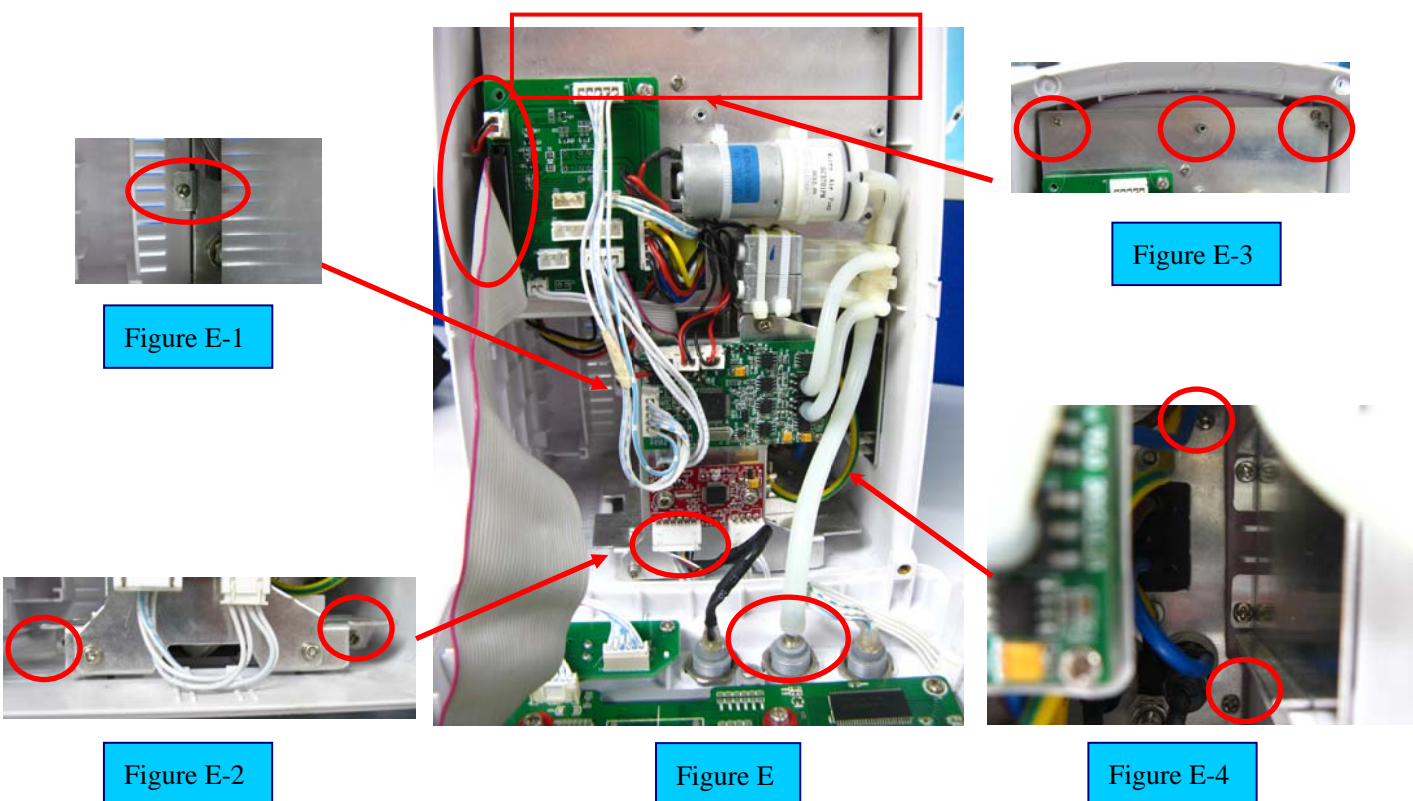


Figure D

<div></div> <div>深圳市科瑞康实业有限公司</div> <div>SHENZHEN CREATIVE INDUSTRY CO.,LTD</div>		文件编号:	
		版本号：V1.0	分发号：
作业指导书	标 题	生效日期:	
	PC-900Pro printer installation	页次：第 2 页 共 3 页	
分发部门： <input checked="" type="checkbox"/> 生产部 <input type="checkbox"/> 物控部 <input type="checkbox"/> 质管部 <input checked="" type="checkbox"/> 工程部 <input type="checkbox"/> 商务部 <input type="checkbox"/> 客户服务部			

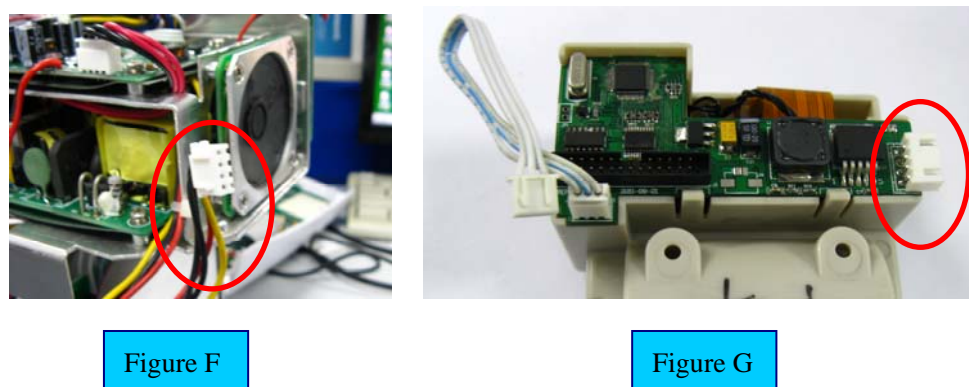
Step 3: Disassemble the main bracket

- According to Figure E,disassemble SpO2 module connecting cable, connecting hose of NIBP module and LCD screen connecting cable which are pointed out by red circles, to make the front cover separate with the rear cover.
- Disassemble eight(8) screws as shown in Figure E-1,2,3,4
- Remove the main bracket from the rear cover



Step 4: Connect power cable of printer

- Pick out the power cable of printer from the power supply board (as Figure F).
- Connect the power cable of Figure F to the socket on printer which is pointed out on Figure G





深圳市科瑞康实业有限公司
SHENZHEN CREATIVE INDUSTRY CO.,LTD

文件编号:

版本号: V1.0

分发号:

作业指导书

标 题

PC-900Pro printer installation

生效日期:

页次: 第 3 页 共 3 页

分发部门: ☒ 生产部 ☐ 物控部 ☐ 质管部 ☒ 工程部 ☐ 商务部 ☐ 客户服务部

Step 5: Remove the printer cover plate on the side face of monitor as shown in below figures.



Figure H



Figure I



Figure J

Step 6: Install the printer

- Remove the printer shield
- Push the printer to the slot (as Figure K), be careful not to get the power cable loose
- As Figure L, install two ST2.3x6 screws to corresponding locations
- Install the printer shield back in position and check whether the roller works or not.



Figure K



Figure L

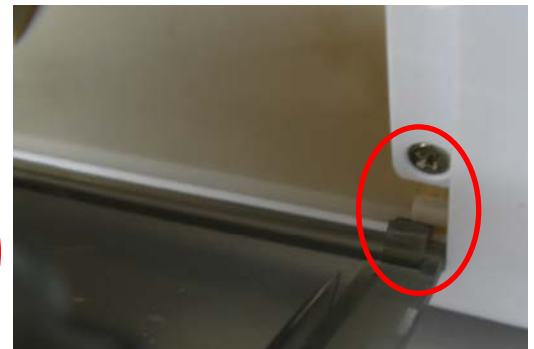


Figure M

Step7: Install the main bracket: install eight(8) screws back to the corresponding locations as per Figure E.

Step 8: Install the serial cable of printer to the Mainboard, as shown in Figure N.



Figure N

Step 9 :Install the front cover and battery back to the device